



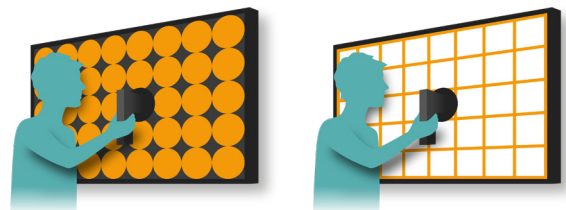
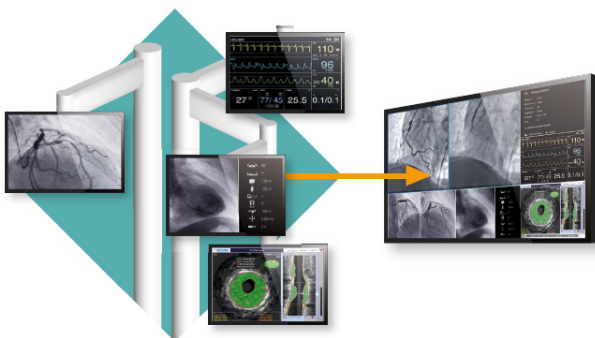
57.5-inch Display with 4K UHD Resolution for a Clear Display of Images in the Medical Environment

Everything in a Single Glance

Compared to solutions with multiple monitors, there are no regional color differences or obtrusive bezels between individual image sections on large screen monitors with high resolution, so that users can conveniently display important information on a single screen.

Diagnostic Precision with Factory Adjustment

To ensure the most accurate and consistent shadings possible, EIZO carefully measures and sets every grayscale tone on the production line to offer monitors fully compliant with DICOM Part 14.



RadiForce® LL580W

Maintain the Precision

Monitor calibration can be carried out to maintain DICOM Part 14 compliance. In addition, the image display remains consistent over time thanks to the built-in backlight sensor.

Constant Brightness Across the Screen

The Digital Uniformity Equalizer (DUE) function provides optimum backlight luminance uniformity which is considered difficult to attain due to the characteristics of LCD monitors, especially with larger screen sizes.

Work Safely with Minimal Picture Delay

With images displayed on the screen in real time, time critical aspects of image distribution are addressed to ensure e.g. safe catheter localization during insertion into an artery.

Quick Brightness Stabilization for Instant Viewing

EIZO's fully automated stability function makes use of an internal backlight sensor to quickly stabilize the brightness level at startup and to compensate for fluctuations caused by variations in ambient temperature and the passage of time.

Comfortably View

The wide viewing angles allow multiple surgeons to watch the monitor simultaneously.

Prepared for Flexible Image Display

The LL580W is also designed for use together with a Large Monitor Manager LMM0802 or LMM56800. This allows different video signals to be collected and flexibly displayed on the monitor's large screen. Depending on the working situation and user preferences, various layouts can be defined and selected with different arrangements and window sizes together with a Large Monitor Manager.

Arm Mountable VESA Compliance

VESA compliance to be attached to existing mounting accessories.

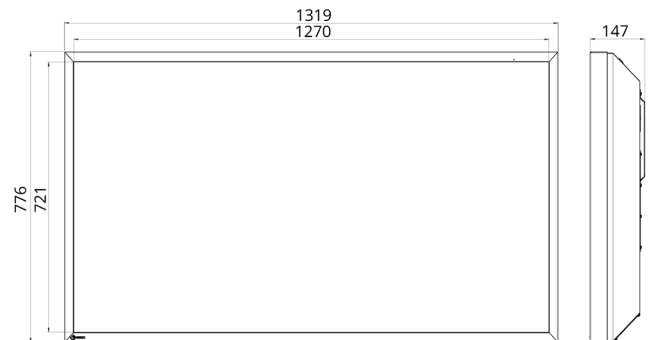
Customer Assurance with Medical Standards

The monitor meets the strictest medical safety and EMC emission standards.

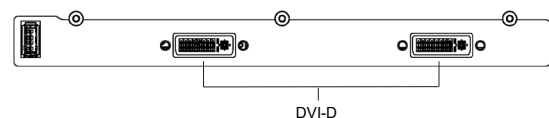
Specifications

Cabinet Color	Black	
Panel	Type	Color-LCD Panel (VA)
	Backlight	LED
	Size	146 cm / 57.5"
	Native Resolution	3840 x 2160 (16:9 aspect ratio)
	Viewable Image Size (H x V)	1270 x 721 mm
	Pixel Pitch	0.331 x 0.334 mm
	Display Colors	8-bit colors: 16.77 million colors
	Viewing Angles (H / V, typical)	178° / 178°
	Brightness (typical)	500 cd/m ²
	Calibrated Brightness	380 cd/m ²
Contrast Ratio (typical)	5000:1	
Response Time (typical)	9.5 ms (midtone)	
Video Signals	Input Terminals	DVI-D (dual link) x 2
	Digital Scanning Frequency (H / V)	30 - 80 kHz / 60 - 75 Hz
USB (for service and update purposes)	USB-A, USB-B	
Power	Power Requirements	AC 100 - 240 V: 50 / 60 Hz
	Maximum Power Consumption	200 W
	Power Save Mode	Less than 30 W
	Power Management	DVI DMPM
Sensor	Backlight Sensor	
Physical Specifications	Net Weight	42 kg
	Hole Spacing (VESA Standard)	400 x 400 mm, M8, depth 16-20 mm
Environmental Requirements	IP20	
Certifications & Standards (Please contact EIZO for the latest information)	CE / UKCA (Medical Device), IEC/ EN60601-1 (Ed. 3.1), CAN/CSA C22.2 No. 60601-1, EN60601-1-2 Class B, ANSI/AAMI 60601-1, FCC-B, RoHS, WEEE, CCC, BIS	
Supplied Accessories (May vary by country, please contact EIZO for details)	Dual link signal cable (DVI-D - DVI-D) x 2, Utility Disk (PDF Instructions for Use)	
Optional Accessories	Large Monitor Manager LMM0802 or LMM56800, DVI Transmission Link TDL3600 or TDL2300, Protective Screen FPP5800	
Order Number	6GF62008AC01	

Dimensions (mm)



Video Connectors



You will find your EIZO contact partner at:
www.eizo-or.com/contact

All product names are trademarks or registered trademarks of their respective companies. EIZO, the EIZO Logo, and CuratOR are registered trademarks of EIZO Corporation. Specifications are subject to change without notice.