

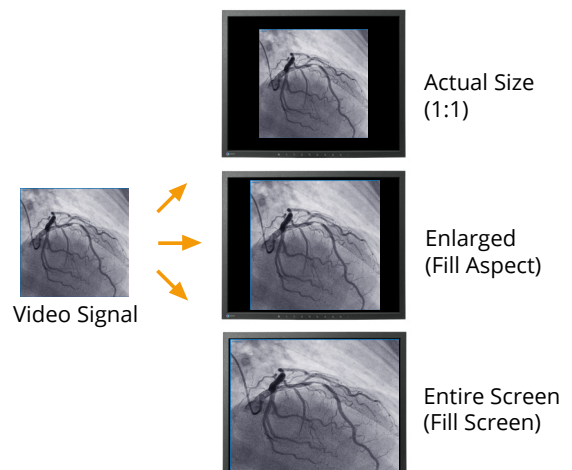
19-inch Surgical Monitor for Accurate Diagnostic Image Display

Clear Visibility

The IPS panel technology used provides high contrast and wide viewing angles for clear visibility, even when viewing the monitor from the side. In addition, the monitor delivers flicker-free images, even at low refresh rates, alleviating eyestrain caused by a flickering screen.

Adapt Different Resolution Signals

In OR and medical imaging environments, various equipment supporting different video signals and resolutions is frequently used. The LS1910 can display video input signals in their actual size, enlarged, or displayed over the entire screen, depending on user needs.



CuratOR® LS1910

Digital and Analog Video Inputs

The monitor has both DisplayPort™ and DVI-I input connections, allowing for flexible connection to modern or legacy imaging systems, whether the image source is digital or analog. The monitor automatically displays the connected analog video signal. If this is not sufficient, the display settings can be adjusted by using the On Screen Display (OSD). The monitor comes with D-Sub, DVI, and BNC adapters for connecting to analog systems.

DICOM® Part 14 Calibration

To ensure the most accurate and consistent shadings possible, EIZO carefully measures and sets every grayscale tone at the factory for full compliance with DICOM® Part 14. The five default presets contain practice-based settings. Each preset meets the current specifications for diagnostic monitors as standardized in the DIN 6868-157 room classes.

Stable Brightness and Instant Image Display

EIZO's fully automated stability function uses an internal backlight sensor to quickly stabilize the brightness level at startup and to compensate for fluctuations caused by variations in ambient temperature and the passage of time.

Installation on a VESA Mount

Compliance with the VESA standard enables attachment to existing mounting accessories, such as ceiling suspensions, wall fixtures, or stands.

Easy Access to Control Buttons

The monitor's OSD can be easily accessed via buttons on the front. The front location allows streamlined use when the monitor is mounted side-by-side with another screen, such as in a ceiling suspension. The OSD buttons can be locked to prevent accidental or unauthorized adjustment to the monitor.

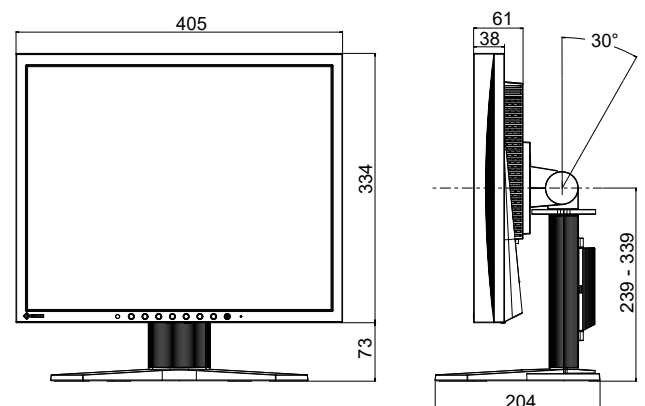
Versatile Positioning for Improved Ergonomics

EIZO's highly versatile stand offers tilt, swivel, and wide height adjustment range, enabling you to position the monitor for optimal comfort.

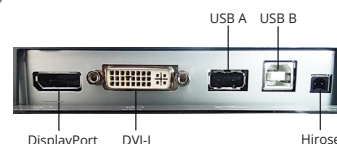
Specifications

Model Variations		LS1910: without stand LS1910-S: with stand
Cabinet Color		Black
Panel	Type	TFT Color-LCD Panel (IPS like)
	Backlight	LED
	Size	19" (48.3 cm)
	Native Resolution	1280 x 1024 (5:4 aspect ratio)
	Viewable Image Size (H x V)	376.3 x 301.1 mm
	Pixel Pitch (H x V)	0.294 x 0.294 mm
	Display Colors	8-bit colors: 16.77 million colors
	Viewing Angles (H / V, typical)	178° / 178°
	Brightness (typical)	330 cd/m ²
	Recommended Brightness for Calibration	250 cd/m ²
Contrast Ratio (typical)		1000:1
Response Time (typical)		13 ms rising, 12 ms falling
Video Signals	Input Terminals	DisplayPort, DVI-I (digital and analog RGBHV)
	Digital Scanning Frequency (H / V)	30 - 80 kHz / 60 - 75 Hz
	Analog Scanning Frequency (H / V)	30 - 80 kHz / 50 - 85 Hz
	Sync Formats	Sync Separate, Composite Sync and SoG
USB	Upstream	USB 2.0: Type-B (communication between monitor and connected PC)
	Downstream	USB 2.0: Type-A (communication with external devices)
Features & Functions		Prioritised input for emergency signal (DVI-A connector)
Sensor		Backlight Sensor
OSD Language		English, German
Power	Power Requirements	AC 100 - 240 V: 50 / 60 Hz
	Maximum Power Consumption	Less than 58 W
	Power Save Mode	Less than 10 W
	Power Management	Digital: DVI DMPM Analog: VESA DPM
	Power Output	DC 5V, 1A (Hirose)
Environmental Requirements		IP20
Physical Specifications	Net Weight	LS1910: 4.3 kg LS1910-S: 6.1 kg
	Hole Spacing (VESA Standard)	100 x 100 mm, M4, depth 5-10 mm
Certifications & Standards (Please contact EIZO for the latest information)		CE / UKCA (Medical Device), IEC/EN60601-1, CAN/CSA C22.2 No. 60601-1, ANSI/AAMI ES60601-1, EN60601-1-2 Class B, FCC-B, RoHS, WEEE, CCC, BIS
Supplied Accessories (May vary by country, please contact EIZO for details)		Adapter (D-Sub - DVI), adapter (BNC - D-Sub), Utility Disk (PDF Instructions for Use)
Order Numbers		LS1910: 6GF62102JL50 LS1910-S: 6GF62102JL51

Dimensions (mm)



Connectors



You will find your EIZO contact partner at:
www.eizo-or.com/contact

EIZO, the EIZO logo, and CuratOR are registered trademarks of EIZO Corporation. DisplayPort is a trademark of the Video Electronics Standards Association in the United States and other countries. DICOM is the registered trademark of the National Electrical Manufacturers Association for its standards publications relating to digital communications of medical information. All other company names, product names, and logos are trademarks or registered trademarks of their respective owners. Specifications are subject to change without notice.