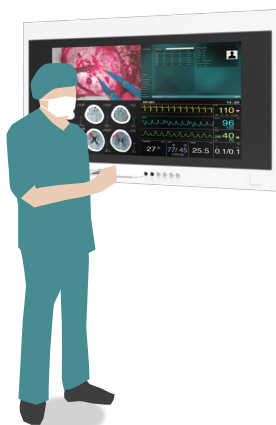




Digital 4K UHD Viewing System with Integrated 55-inch Screen and IT and Video Management Components

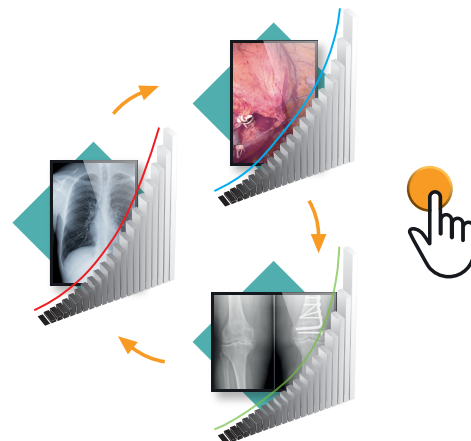
Perfect Viewing

The Surgical Panel SP1-554K is designed for use in the operating room. Integrated into the hospital's IT structure, it supports various workflows. The SP1-554K provides the OR team with a perfect view also from remote locations in the operating room.



Optimized View Through Simple LUT Switching

Every 4K Surgical Panel is equipped with an easy-access LUT switch as standard. One of the five predefined lookup tables can be selected at the simple press of a button. This allows operators to display various medical images and videos under optimal viewing settings.



Surgical Panel SP1-554K

Customized Housing

The housing dimensions of the Surgical Panel can be individually adapted to the conditions in the operating room. In addition, the housing color can be selected from the RAL color palette depending on the color concept on site.

Wide Ranging Monitor Options

The Surgical Panel are available in a wide range of screen diagonals for flexibly meeting local application requirements. The option to combine a viewing unit with a 24" Full HD HIS workstation also offers a full viewing environment while saving on space.

Intuitive Touch Operation

Every CuratOR Surgical Panel can be equipped with a touchscreen to facilitate intuitive operation of software in the OR. They are easily operated while wearing gloves for use in sterile environments.

Flexible Integrated Video Management VMbasic

A modular interior design enables customer-specific configuration. Every 4K Surgical Panel can be optionally equipped with the video management function VMbasic. Easily switch between video signals connected internally or optionally on the front at the simple press of a button. Two further buttons allow the selection of the preset layouts and the rotation of the video inputs by keeping the active layout.

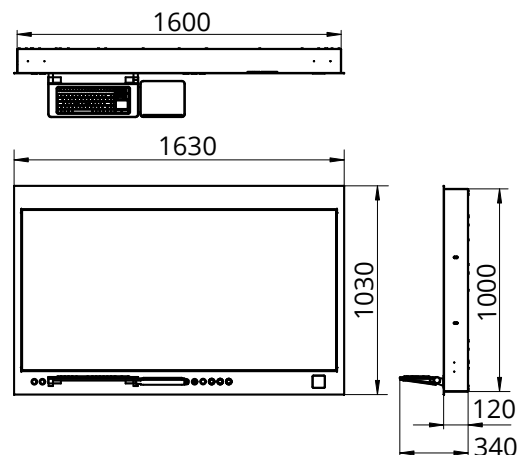
Accessories and Connectivity

Surgical Panel have front USB as standard for connecting peripheral devices. There is also the option of integrating additional interfaces on the front frame. These can be individually connected to the inputs available in video management.

Specifications

Model Variations		SP1-554K: without touchscreen SP1-554KT: with touchscreen
Housing	Material	Powder-coated sheet steel
	Front	Combination of power-coated stainless steel and anti-reflective safety glass (ESG)
	Color	Available in every RAL color
	Mounting Options	Flush mounting (optional: surface mounting)
Panel	Size	55"
	Diagonal	138.8 cm (16:9 aspect ratio)
	Panel Type	TFT Farb-LCD Panel with DICOM® Preset
	Native Resolution	3840 × 2160 (UHD)
	Display Colors	1.07 billion colors
	Pixel Pitch	0.315 mm x 0.315 mm
	Brightness (typical)	700 cd/m²
	Contrast Ratio (typical)	1100:1
	Viewing Angles (H / V, maximum)	178°, 178°
	Response Time (typical)	8.0 ms (Gray-to-Gray)
Backlight		LED
Touchscreen		Projected capacitive, multi-touch (SP1-554KT only)
IT Components <small>(Expandable within the scope of the PC specifications)</small>		INTEL® Core™ i5 processor - 3.0 GHz, INTEL® chipset, 18 MB cache, 8 GB DDR3 RAM, SATA SSD, LAN RJ 45 - 10/100/1000 Base TX x 2
Operating System		MS Windows 10 Pro, MS Windows 11 Pro
Keyboard / Mouse		Anti-microbial medical silicone keyboard with integrated mouse storage (foldable), silicone mouse (visual 5 keys, laser mouse / IP65, occupies 1x USB)
Inputs (front side)	USB	USB Type-A: 2.0, 3.0
	Signal Inputs (optional, with VMbasic only)	DisplayPort™, DVI-I Single Link, HDMI® (4K@30Hz), HDMI® (4K@60Hz) x 2
Push Buttons (front side)	Standard	Main switch, system switch, LookUp table switch (DICOM normal, DICOM bright, Gamma 1.8, 2.0, 2.2, 2.4)
	VMbasic (optional)	Signal input switch (DisplayPort, DVI-I Single Link, HDMI (4K@30Hz), HDMI (4K@60Hz x 2), layout switch (PiP, PaP, LR, TB, Quadsplit, Single), rotate signal inputs with active layout
Maximum Power Consumption		275.0 W
Power Requirements		100 - 240 V / 50 - 60 Hz / 4 - 2 A
Thermal Load		990.0 kJ/h
Net Weight		85 kg
Certifications & Standards <small>(Please contact EIZO for the latest information)</small>		CE, UKCA, IEC/EN 62368-1, IEC/EN 60601-1, IEC/EN 60601-1-2, RoHS, WEEE
Dimensions (mm)	Device (WxHxD)	1600 x 1000 x 120
	Niche (WxHxD)	1610 x 1010 x 140
	Masking Frame (WxH)	1630 x 1030

Dimensions (mm)



You will find your EIZO contact partner at:
<https://www.eizo-or.com/contact>

EIZO, the EIZO logo, and CuratOR are registered trademarks of EIZO Corporation. DisplayPort is a trademark of the Video Electronics Standards Association in the United States and other countries. DICOM is the registered trademark of the National Electrical Manufacturers Association for its standards publications relating to digital communications of medical information. The terms HDMI, HDMI High-Definition Multimedia Interface, HDMI trade dress and the HDMI Logos are trademarks or registered trademarks of HDMI Licensing Administrator, Inc. Intel or Intel Core are trademarks of Intel Corporation in the U.S. and/or other countries. Windows is a registered trademark of Microsoft Corporation in the United States and other countries. All other company names, product names, and logos are trademarks or registered trademarks of their respective owners. Specifications are subject to change without notice.