

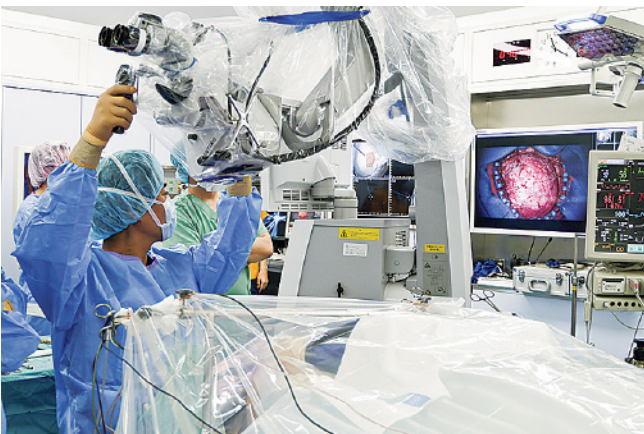
The Usefulness for Research, Education and Surgery - Kyoto University Hospital, Japan

✕ Bringing the latest video management solutions to advanced medical treatment



Based on the spirit of “For the Patient,” the Department of Neurosurgery at the Kyoto University Hospital provides the advanced surgical treatments to patients with difficult-to-treat diseases. Awake surgery with intraoperative monitoring is a unique technique for glioma resection, which is the strong point of the department.

EIZO’s OR solutions were adopted by this operating room in 2014. We asked Assistant Professor Yoshiki Arakawa about how EIZO products are being used.



✕ Interview

Dr. Yoshiki Arakawa
DMSc, Assistant Professor
Department of Neurosurgery,
Kyoto University Hospital

✕ Background

Why did you choose EIZO’s operating room solutions?
For awake surgery in glioma resection involving the language or motor cortex, displaying and integrating multiple medical images and information is very important. We adopted EIZO’s operating room solutions with the LMM0801 because of their function and resolution adequate to our needs.

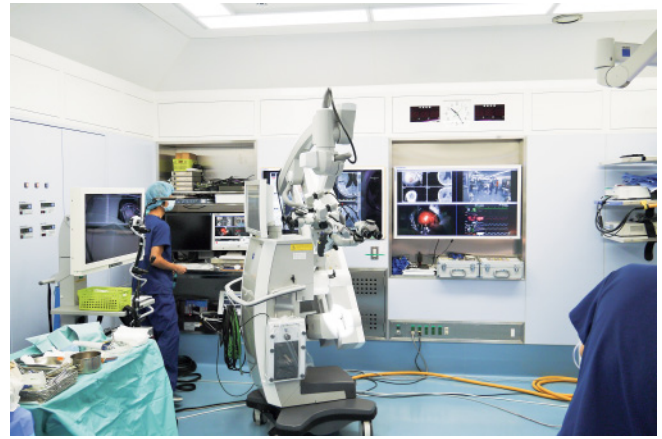


Reason for selection

Out of all the different manufacturers, why did you choose EIZO?

The most attractive factors are the LX470W resolution. It's capable of faithfully depicting high-definition images from microscopes and endoscopes and also offers excellent grayscale tone reproduction for MRIs, CTs, and other DICOM images.

Using the LMM0801, up to eight images and videos can be gathered in layout, which makes surgeons immediately recognize all situations. Also, the layout can be changed easily using the CID1000P touch panel. The excellent usability and high level of freedom are attractive in the operation.



How the solutions are used

How are the LMM0801 and RadiForce LX470W used during surgeries?

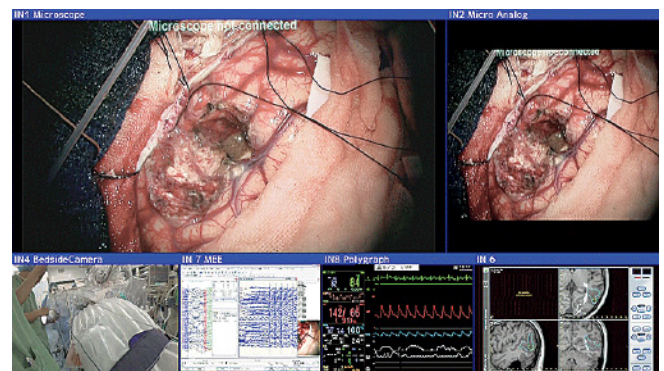
Images from microscope cameras, surgical cameras, bedside cameras, navigation systems, biological information devices and others are put in the LMM0801, and four to six images are displayed together on the LX470W. Simultaneously, the display images are transferred to the recording system.

In microscopic and endoscopic surgery, the flexibility of image layout on the LX470W shows operative view with a large scale. Surgeon as well as other staff are able to see and share intraoperative information and participate in the surgical process. Taken together, these large, high-resolution images are useful for medical education.

More Information

www.eizo-or.com

Kyoto University Hospital
54 Shogoin-kawahara-cho, Sakyo-ku, Kyoto
606-8507 Japan
<http://www.kuhp.kyoto-u.ac.jp/>



Flexible adjustment of image layout and size

EIZO GmbH

Siemensallee 84
76187 Karlsruhe, Germany

www.eizo-or.com

All product names are trademarks or registered trademarks of their respective companies. EIZO, CuratOR and RadiForce are registered trademarks of EIZO Corporation.

Copyright © 2018 EIZO GmbH. All rights reserved (01/2018)